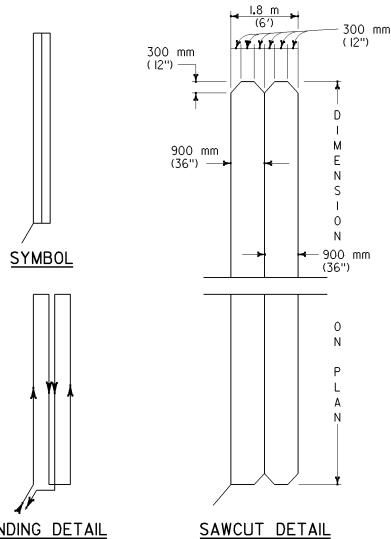
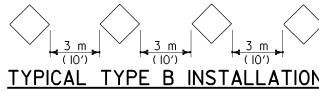
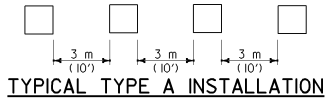
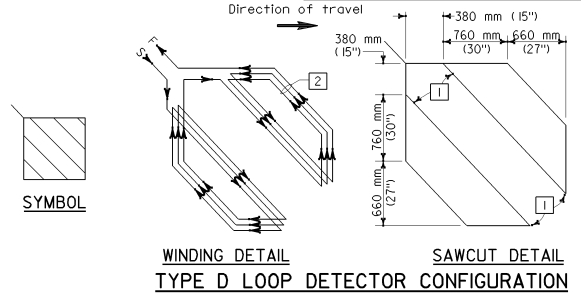
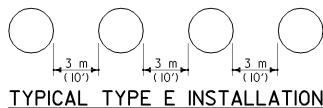
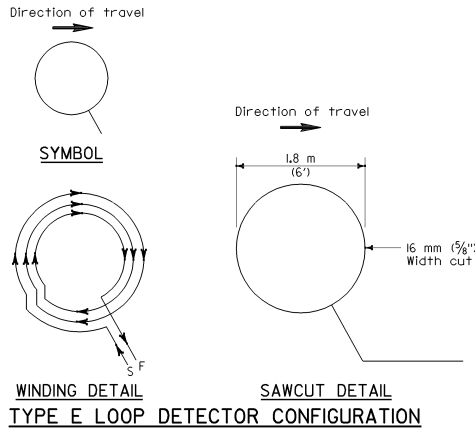


**NOTE**  
Install loop with loop centerline parallel to curb or lane line.

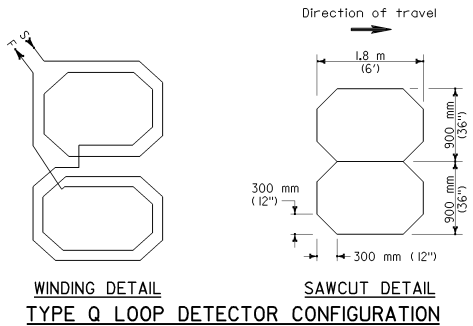


**WINDING DETAIL**  
One turn shown\*

**TYPE C LOOP DETECTOR CONFIGURATION**  
\*Install two turns unless otherwise specified.



- 1 Round corners of acute angle sawcuts to prevent damage to conductors.
- 2 Install 3 turns when only one Type D loop is on a sensor unit channel. Install 5 turns when one Type D loop is connected in series with 3 additional 1.8 m x 1.8 m (6'x6') loops on a sensor unit channel.



STATE OF CALIFORNIA  
DEPARTMENT OF TRANSPORTATION  
**SIGNAL, LIGHTING AND ELECTRICAL SYSTEMS DETECTORS**

These "Standard Plans for Construction of Local Streets and Roads" contain units in two systems of measurement: International System of Units (SI or "metric") and United States Standard Measures shown in the parentheses ( ). The measurements expressed in the two systems are not necessarily equal or interchangeable. See the "Foreword" at the beginning of this publication.

NO SCALE

DIST.	COUNTY	ROUTE	KILOMETER TOTAL PROJECT	POST NO.	SHEET NO.	TOTAL SHEETS

Theresa Gabriel  
REGISTERED PROFESSIONAL ENGINEER

July 1, 2002  
PLANS APPROVAL DATE

The State of California or its officers or agents shall not be responsible for the accuracy or completeness of electronic copies of this plan sheet.

California now has a web site! To get to the web site, go to <https://www.dot.ca.gov>

Theresa A. Gabriel  
No. E15129  
Exp. 6-30-04  
CIVIL  
STATE OF CALIFORNIA